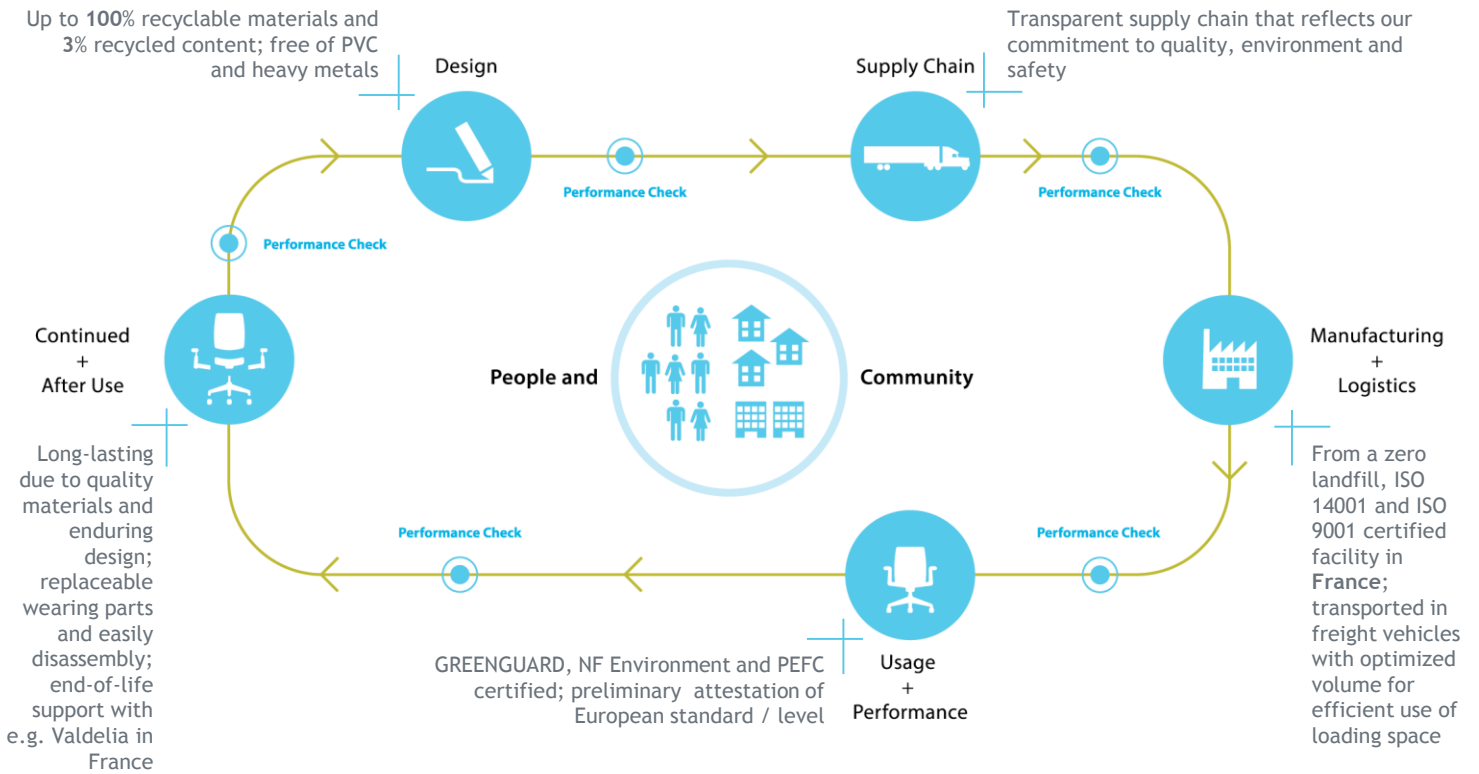


# LTB

PRODUCT CATEGORY: SEATING

## PRODUCT ENVIRONMENTAL DATA SHEET

SECTOR: EUROPE



## HAWORTH®

The recycled content for LTB was calculated with the following options; two-seater of melamine panel boards with angled armrests.

Please note that calculations of recycled content are based on data provided by suppliers (preferably), industry averages, ranges or other broadly based information. The purpose of our assumptions is to provide the most accurate recycled content calculations possible but variability in market conditions or manufacturing processes may result in higher or lower content than indicated on the PEDS.

Material	Material Weight	Recycled Content	Recyclability
Plywood	34.7 kg (82.7%)	<p>1% 2%</p> <p>■ Pre Consumer ■ Post Consumer</p>	<p>100%</p>
Steel	3.3 kg ( 8.0%)		
Polyurethane foam	2.3 kg ( 5.5%)		
Fabric	1.5 kg ( 3.6%)		
Plastics	0.0 kg ( 0.1%)		
Other Materials	0.1 kg ( 0.1%)		
<b>Total</b>	<b>41.9 kg (100%)</b>		



## LIFE CYCLE ASSESMENT (LCA)\*

Life Cycle Assessments (LCAs) are one tool to enhance the triple bottom line of Haworth products by identifying high environmental impact stages within our products' lifecycles. Haworth is committed to better understanding and reducing the impacts of our products and operations on the natural world.

Carbon Footprint                      156.0 kg CO<sup>2</sup> eq.

\*Impact assessment method used was TRACI 2.1 v1.00



## MATERIAL CHEMISTRY

We believe that our products should be safe for humans and the environment and work diligently to identify and eliminate chemicals of concern in the materials we source. We thereby consider legal requirements (i.a. REACH Article 33, RoHS directive), sustainable product certifications, and our own standards as part of our sustainability strategy.

LTB does not contain:

- Polyvinyl Chloride (PVC)
- Persistent organic pollutants
- Heavy metals (hexavalent chrome, lead, cadmium, mercury)

Adhesives used to manufacture components are solvent-free.

Environmentally preferable fabrics are available, such as EU Ecolabel and Oeko-Tex Standard 100 certified.

PEFC certified product.



## CERTIFICATION



GREENGUARD certified  
Certification # 29194-410



NF Environment certified  
Certification # AMB 004492



PEFC certified  
Certification # 10-31-1827



Pilot phase European Sustainability  
Standard  
Preliminary attestation: level 2



## BUILDING STANDARDS

Leadership in Energy and Environmental Design (LEED®) v4:

- Interiors life-cycle impact reduction - design for flexibility strategies include take back system, recyclable materials, or moveable walls
- Responsible sourcing of raw materials - Haworth reports on raw material sourcing and extraction; products contain recycled content
- Low-emitting materials - major products are GREENGUARD or Indoor Advantage™ Gold certified

WELL Building Standard®:

- Adaptable and flexible - our integrated portfolio ensures products are designed with flexibility and adaptability in mind
- Low emitting materials - major products are GREENGUARD or Indoor Advantage™ Gold certified
- Non-toxic materials - major products are free of chemicals of concern
- Material transparency - chemical and life-cycle assessments are being carried out